



President's Message—Polina Knaster



Ahoy!

I think that everyone is starting to unbatten the hatches and collectively our industry is starting to realize that the worst of the storm may very well be behind us. It's been a challenge for many of you and it's sometimes darkest before the dawn. Let's hope that the worst is behind us.

Social Night was quite a success with everyone enjoying the food stations and my personal favorite being the chocolate fountain with Rice Krispies and other delicacies. In addition, I have to state for the record that the vote was not rigged and I won the iPod fair and square. Finally winning something after many years was quite the thrill. We owe a big thank you to the planning committee who were phenomenal in making it happen without a hitch.

(Continued on page 2)

SNJ Event This Month

Wednesday, April 15th, 2009

April Dinner Meeting

- 5:30 PM Cocktails
- 6:30 PM Dinner
- 7:30 PM Presentation

\$20 for government employees only \$30 all others
Location: Carlucci's - See Page 9 for Information

Table of Contents

<i>Calendar of Events:</i>	2
<i>Membership Update:</i>	3
<i>Article:</i>	4
<i>Sponsors</i>	5-8
<i>April Meeting</i>	9-11
<i>Field Visit Permission Slip</i>	12

SNJ ASHE Upcoming Calendar of Events

(Continued from page 1)

The joint meeting with CIAP and WTS in February was great and everyone enjoyed themselves. In addition I'd like to thank the presenters for the Route 52 project, Dave Lambert, Mike Sidani, and Sly Fryc showed us the challenges and triumphs for the project.

Just recently on March 25th, the WTS held a joint event with ASHE with the topic being the American Recovery and Reinvestment Act (ARRA) - Stimulating NJ's Economy". We continue to partner with our colleagues and other professional organizations in bringing exciting and informative events as well as an opportunity to network and make new acquaintances. The February and March events are a very good example of this collaboration.



This month we have an exciting presentation held about the Mullica River Bridge Project. Elizabeth Trimpin and Tom Fisher will explain the case for the design and the challenges of the project. RSVP early!

Next Month we have our field trip to the Route 36 Highlands and we're coming up on the Golf Tournament. Make sure to get your golf hole and corporate sponsorship forms through your company's payment systems. We always have a great time at the event, I'm sure you will too!

I hope to see you all at this Wednesday's meeting!

Best Wishes!

Polina Knaster (POLINA.KNASTER@DOT.STATE.NJ.US)

Calendar of Events FY 2008		
DATE	EVENT	SPEAKERS/LOCATION
4/15/2009	GSP Mullica River Bridge	Tom Fisher & NJTPA / Carlucci's
5/12/2009	Project of the Year Awards (POTY)	ASHE—North Jersey
5/20/2009	Field Trip - Route 36 Highlands	Jacobs Engineering
7/15/09	Golf Outing	Buena Vista Country Club

Board of Directors 2008-2009

ASHE - SOUTHERN NJ SECTION BOARD OF DIRECTORS (2008 - 2009)			
<u>OFFICERS</u>	<u>DIRECTORS</u> 3 - YEAR TERM (2008 - 2011)	<u>DIRECTORS</u> 2 - YEAR TERM (2008 - 2010)	<u>DIRECTORS</u> 1 - YEAR TERM (2008 - 2009)
<i>President</i> Polina A. Knaster, P.E., PMP NJ Dept. of Transportation 732.308.4037	<i>Past President</i> Samir D. Mody, P.E. HNTB 856.853.8522	David L. Rue, P.E. PB Americas, Inc. 609.734.7086	E. David Lambert, P.E. NJ Dept. of Transportation Div. of Project Management 609.530.4235
<i>1st Vice President</i> James E. Maloney, P.E. JMT 267.256.0300	Jud Wible PB Americas, Inc. 609.734.7052	Mahir Sen, P.E. PB Americas, Inc. 973.353.7607	Jose Lopez NJDOT ~ retired 609.530.2457
<i>2nd Vice President</i> George Lobman AECOM 732.564.3319	Joseph Fiocco, P.E., PTOE McMahon Associates 609.585.5745	Patrice Malleus, P.E. CMX 732.577.9000	James E. Maccariella, Jr. PhD, P.E. Urban Engineers 856.663.5550
<i>Secretary</i> Walter N. Hucal, P.E. PB Americas, Inc. 609.734.6994	Robert Maschke, Jr., P.E. Chas H. Sells, Inc. 609.584.0050	Thomas G. Zink, P.E. Gannett Fleming, Inc. 856.802.9930 (x 153)	Joseph A. Danyo, P.E., P.P. Michael Baker, Jr. Inc. 609.807.9595
<i>Treasurer</i> Edward H. McMahon III, P.E. AECOM 301.354.1355	Joanne Stokes Stokes Advertising 609.859.8400	<p><i>AUTHORS WANTED!</i> <i>Articles for BASELINE and SCANNER, the ASHE Southern New Jersey and National newsletters are needed!</i> Submit articles to the Editor: Judson Wible PB Americas, Inc. 609.734.7052 / wible@pbworld.com</p>	
<i>Region 6 Director</i> Samir D. Mody, P.E. HNTB 856.853.8522			

SNJ ASHE Membership Update

We Proudly Welcome:

David Christopher Horne - So Deep, Inc.
 Edward R. Klump - T&M Associates
 Dennis Motiani - NJDOT
 Joseph J. Romano - Michael Baker Jr., Inc.

Total Section
 Members:

206

Know someone who would like to join?

Click the link below to download an application!

<http://www.reg6ashe.org/docs/SNJ/membershipapplication2007-08.pdf>

Engineering lends itself more to joint ventures than most industries. Normally competing companies joining together to tackle very large and complex projects. Other industries have their share of joint ventures but not with the consistency as with construction projects. Joint ventures must accomplish in a very short period what most companies take years to achieve; a talented group of professionals dedicated to accomplishing a common goal. A myriad of personalities and egos brought together. Now you ask yourself, what does this have to do with NASCAR? Everything! I tried to find a quote from a well respected NASCAR driver that would proclaim the attributes of teamwork. I came up short. I found a quote from the late Dale Earnhardt Sr. He said, "Two of my favorite things are my steering wheel and my Remington rifle." It didn't seem to fit. I went outside the NASCAR realm and after hundreds of seconds of research I found a quote from Vince Lombardi. Coach Lombardi said, "Individual commitment to a group effort - that is what makes a team work, a company work, a society work, a civilization work." It is the same in joint ventures and it is the same in NASCAR. Putting aside the egos, the personal agendas and focusing on the task at hand. The first thing a NASCAR driver does after he takes a sip of Pepsi is to thank the rest of his team, the engineers, the pit crew and his sponsors. It would be obvious to say it is the driver alone who wins races but that could not be further from the truth.

Jeff Gordon endured his first winless season in 2008. He admits now he was not rested most race days as his wife and new born stayed with him in the trailer the night before each race. The baby kept him awake. There were other issues. The engineers in the shop could not configure the best set up for the new car introduced by NASCAR and he routinely lost time in the pits with slow pit stops. Not a good year. 2009 has seen a complete turnaround. The team added a new engineer and the cars have been running up front every race, the pit crews have new motivation and have been mistake free all year. Oh, and Gordon's wife does not show up until race day. He is currently at the top of the leader board. It took good planning, focus, putting the best possible people on board and getting the individual commitment from every person. A joint venture is the same and begins with good planning, putting the best possible firms together and submitting award winning proposals.

The economic stimulus package will test the engineering and construction industry with the number and scope of projects as well as the aggressive schedule. The number of "Stimulus Package" conferences and networking events in itself has been overwhelming. It is clear the teams that can pull together quickly and effectively will surely benefit over the next several years and share in the adventures of revitalizing our infrastructure. See you at the next ASHE meeting!

*Bob Palumbo, CBC (Certified Bean Counter)
JMS Visual Communications / Stokes Advertising*

Need to fill an open position in your company?

Put Your ASHE Classifieds in the Next Issue in Three Simple Steps

1. Become a Newsletter Sponsor for \$150 or act on an even better deal of \$175 for Newsletter and Website Sponsorship and give us that information.
2. Give us the open position title, location, a short write up of 100 words or so about the position and your contact information.
3. Send it to Jud Wible wible@pbworld.com

Fine Print: Limit 5 open positions per newsletter. Open positions will run for one newsletter unless otherwise specified.

THE BEST WORK OF YOUR LIFE. **URS**

URS is one of the world's largest engineering design and technical services firms. URS offers a variety of unique opportunities to channel your energy and innovative thinking on rewarding engineering, design, construction management and environmental projects. We are currently seeking qualified candidates to fill multiple positions for our New Jersey operations. All openings require a Bachelor's Degree or equivalent experience, and a range of 3 to 20 years of experience. Below is a list of available positions with the assigned Requisition Number. Please submit your resume online at www.urs.apply2jobs.com.

Senior Civil/Hwy PM (URS33911)

Civil/Hway Project Eng (URS33907)

Project Structural Engineer (URS34125 and URS30446)

Civil-Bridge Eng (URS33556)

Resident Engineer (URS33909)

Construction Inspector (URS30528 and URS33910)

URS offers competitive salaries and benefits packages, including flexible benefits, and 401(k) and Employee (EOE) and strongly supports diversity in the workplace. M/F/V/D

**One Penn Plaza, Suite 610, New York, NY 10119
212.736.4444 • www.urscorp.com**



PB Americas, Inc. is currently looking for an immediate Structural CADD Technician to work on various Bridge Design projects in its Princeton New Jersey office.

This position is responsible for production of Structural contract documents from engineering mark-ups, sketches, and/or detailed drawings, in accordance with PB's Quality Assurance Policies/Procedures and Client's requirements. Reading and understanding designs and drawings. Making required changes, additions, and/or revisions, as directed.

The candidate must possess a minimum of 2 years of CADD production experience utilizing Microstation J (V7) and /or Microstation V8 CAD software for bridge design projects. High school diploma plus two years specialized technical drafting is required. Must possess good organizational and communication (oral and written) skills and be able to work well in a team environment. Experience with NJDOT and NJTA/GSP Bridge drafting standards preferred. Familiarity with computer system operation, and other software such as Geopak, AutoCAD and Microsoft Office a plus.

Please apply on-line www.pbworld.com to job #8130 or fax your resume to 609-734-6900.

AN EQUAL OPPORTUNITY EMPLOYER M/F/D/V

Newsletter & Scholarship Sponsors

Creating value by delivering innovative and sustainable solutions for infrastructure and the environment.

Baker

Michael Baker Jr., Inc.
Michael Brescia, P.E.

Michael Conaboy, P.E.
300 American Metro Boulevard
@ Hamilton Transit Complex
Hamilton, NJ 08619
(609) 807-9500

Mike Sidani, P.E.
One Gateway Center
Suite 2330
Newark, NJ 07102
(973) 776-8600

www.mbakercorp.com

What? Your Company is not listed here; and it should be?

E-mail Jud Wible (wible@pbworld.com) with:

- A high resolution company logo
- The text that you'd like to include in the advertisement
- Your plan for submitting payment for sponsorship

Mail Checks to: Jud Wible c/o PB
506 Carnegie Center 2nd. Floor
Princeton, NJ 08540

For More information call: (609) 734-7052



Visual Communications
DOCUMENTATION SPECIALISTS/ since 1985

Make "JMS" part of every construction project:

- DOCUMENTATION SERVICES • AERIAL VIDEO & PHOTOGRAPHY
- PHOTOGRAPHY & VIDEO • BLAST INSPECTIONS
- SAFETY & TRAINING VIDEOS • WEB CAMERAS

P/ 609.859.8400

1666 Route 206 Vincentown, NJ 08088 www.jmsco.com



TRAFFIC PLANNING

AND DESIGN, INC.



Bridge Design & Inspection
Transportation Planning
Construction Services
Roadway Design

www.TrafficPD.com

856-966-4242

ONE PORT CENTER SUITE 506 CAMDEN, NJ 08103



PB Americas, Inc
506 Carnegie Center
Princeton, NJ 08540
609-734-7000

Program Management · Planning · Engineering ·
Construction Management

www.pbworld.com



Highway • Bridge • Bridge Inspection
Construction Phase Services
Architectural • Environmental

4A Eves Drive, Suite 114
Marlton, New Jersey 08053
Phone: (856) 797-4300 • Fax: (856) 983-8739
www.bh-ba.com

Newsletter & Scholarship Sponsors



Imagination, Innovation, Involvement, Impact.

- Transportation
- Environmental
- Planning / GIS / IT
- Construction Services
- Geotechnical
- Landscape Architecture
- Surveying
- Utility Location
- Right-of-Way Services
- Facilities
- Architecture
- Water/wastewater

Offices in Philadelphia, PA - Trenton, NJ - Newark, NJ - Newark, DE and throughout the Eastern US
An employee owned company

What? Your Company is not listed here; and it should be?

E-mail Jud Wible (wible@pbworld.com) with:

- A high resolution company logo
- The text that you'd like to include in the advertisement
- Your plan for submitting payment for sponsorship

Mail Checks to: Jud Wible c/o PB
506 Carnegie Center 2nd. Floor
Princeton, NJ 08540

For More information call: (609) 734-7052



CONVERSE CONSULTANTS
60 Years in Service

- ◆ Geotechnical Engineering
- ◆ Environmental & Groundwater Science
- ◆ Construction Phase Inspection & Testing Services

New Jersey Office:
622 Route 10 W., Ste 10
Whippany, NJ 07981
Tel: (973) 428-0934
Fax: (973) 428-0713

Email: gkabir@converseconsultants.com



Stantec Consulting
161 Gaither Drive Suite 205
Mount Laurel NJ 08054
Tel: (856) 234-0800
Fax: (856) 234-5928

stantec.com

- ROADS & HIGHWAY ENGINEERING
- STRUCTURAL ENGINEERING
- TRAFFIC PLANNING & ENGINEERING
- SURVEYING / GEOMATICS
- LAND DEVELOPMENT
- PROGRAM & PROJECT MANGEMENT

One Team. Infinite Solutions.



Corporate Headquarters
200 State Highway 9
Manalapan, NJ 07726
Tel: 732.577.9000 Fax: 732.577.9888
www.cmxengineering.com

Working Together for a Better Tomorrow



**Engineering • Architecture • Planning
Program and Construction Management**

WAYNE, NJ
201 Willowbrook Blvd., 3rd Floor • Wayne, NJ 07474 • 973.785.0700

NEWARK, NJ
One Riverfront Plaza, 14th Floor • Newark, NJ 07102 • 973.504.7090

PHILADELPHIA, PA
1628 JFK Boulevard, 8 Penn Center • Philadelphia, PA 19103 • 215.587.9000

www.urscorp.com

Newsletter & Scholarship Sponsors



**Industry Leaders in
Subsurface Utility Engineering (SUE)**

- Subsurface Utility Engineering (SUE)
- Utility Designating
- Utility Locating (Vacuum Excavation)
- Confined Space Entry
- Utility Manhole Survey
- Ground Penetrating Radar (GPR)
- Records Research
- Utility Coordination

3490 US Route 1 - Bldg. 15, Ste. H - Princeton, NJ 08540
Tel: 609.452.1007 - Fax: 609.452.1020
www.TBEGROUP.com

What? Your Company is not listed here; and it should be?

E-mail Jud Wible (wible@pbworld.com) with:

- A high resolution company logo
- The text that you'd like to include in the advertisement
- Your plan for submitting payment for sponsorship

Mail Checks to: Jud Wible c/o PB
506 Carnegie Center 2nd. Floor
Princeton, NJ 08540

For More information call: (609) 734-7052



WBEIDBESBE Certified

Stokes Advertising
Your Future - Our Focus

Make "Stokes" part of your team for:

- PUBLIC OUTREACH
- WEB DEVELOPMENT & HOSTING
- VISUALIZATIONS
- 3D RENDERINGS & ANIMATIONS
- VIDEO PRODUCTIONS
- PRESENTATIONS

P/ 609.859.8400

1666 Route 206 Vincentown, NJ 08088 www.stokesadvertising.com

full service transportation engineering firm



CHAS. H. SELLS, INC.

Consulting Engineers, Surveyors & Photogrammetrists

www.chashsells.com

SERVING THE STATE OF NEW JERSEY WITH
PROFESSIONAL SERVICES SINCE 1925

Bridge Inspection · Bridge Design · Traffic Engineering
Highway Planning & Design · Railroad Design
Aerial Mapping · GIS · Surveying / GPS

Robert A. Maschke, Jr., P.E.
rmachke@chashsells.com

T: (609) 584-0050
F: (609) 584-2232



ASHE

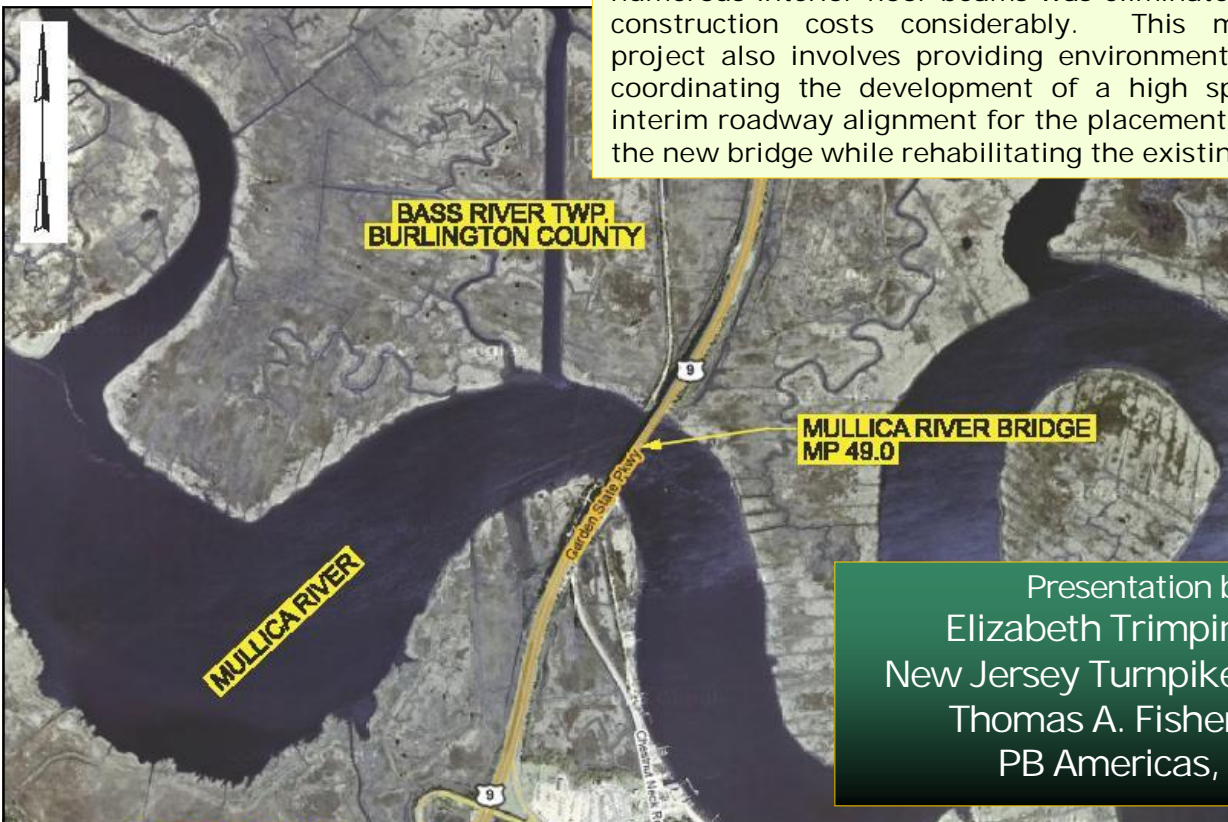
Southern New Jersey

April Dinner Meeting
Wednesday, April 15, 2009

Garden State Parkway (GSP)/Mullica River Bridge Rehabilitation and Widening



PB is the prime consultant responsible for developing the final design and preparing contract documents for two separate construction contracts for this project: construction of a new 1,230' long, six-span, prestressed concrete spliced girder bridge that will ultimately carry three lanes of northbound traffic; and the rehabilitation, deck replacement and site-specific seismic retrofit design for the existing 980' long, eight-span, steel girder/floorbeam/ stringer bridge that will ultimately carry three lanes of southbound traffic. Detailed 3-dimensional finite element models of the existing Mullica River Bridge were developed in order to determine more realistic live load ratings for the existing stringers, floorbeams and girders. As a result, the need to replace numerous interior floor-beams was eliminated, reducing the construction costs considerably. This multi-disciplined project also involves providing environmental support and coordinating the development of a high speed (70 mph) interim roadway alignment for the placement of all traffic on the new bridge while rehabilitating the existing bridge.



Presentation by:
Elizabeth Trimpin, P.E. -
New Jersey Turnpike Authority
Thomas A. Fisher, P.E. -
PB Americas, Inc.

Registration Rates for 2008-09:
\$20 for government employees only
\$30 all others
All reservations must be made via email:
ASHE-SNJ@comcast.net

Meeting Location:
Carlucci's on the Waterfront —
5:30PM Cocktails /
6:30PM Dinner /
7:30PM Presentation

Elizabeth Trimpin

Elizabeth Trimpin, P.E. is an engineer for the Structures Design group of the New Jersey Turnpike Authority. Liz has been working for the Authority since 2004 and involved in the Mullica River Bridge Widening and Rehabilitation project as the project engineer since 2005. She is also involved in the NJTA Bridge Inspection Program for the Garden State Parkway as well as the Authority's bridge repair program.

Liz received her Masters of Engineering from Stevens Institute of Technology in 2002 and her Bachelor of Science in Civil Engineering from the University of Connecticut. Liz has two daughters and resides in Fanwood, New Jersey since 1992.

Thomas Fisher

Mr. Thomas A. Fisher, P.E. has over 35 years of experience in bridge engineering, design and project management and has held the position of Office Manager or Structural Department Manager in several offices of nationally and internationally known bridge design firms. He is presently employed by Parsons Brinckerhoff where he is a Vice President and manages the Structural Department in their Princeton, New Jersey Office. Mr. Fisher has worked on projects along the entire east coast of the United States from Miami, Florida to Bangor, Maine. These projects have included inspection, design and rehabilitation of suspension, cable stayed, deck truss and through truss bridges, box girder and plate girder bridges, movable bridges (vertical lift and bascule), small and medium span bridges, highway, railway and industrial bridges using steel and concrete designs.

Mr. Fisher received his Bachelor's and Master's Degree in Civil Engineering from Lehigh University in 1973 and 1979, respectively.

